

## E3WPA

LED Wall Pack  
Integrated dusk-to-dawn photocell  
2 housing profile options • 10-yr Warranty



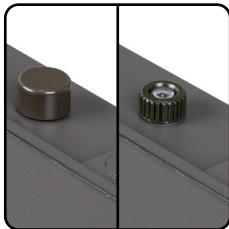
## OVERVIEW

Energetic Lighting's E3WPA series LED commercial wall pack fixtures provide a quick and easy solution for warehouse and industrial applications. Available in 28W, 50W, 70W, and 120W variants, designed to replace traditional 100W-400W equivalent HID wall pack fixtures. The standard design looks and feels just like traditional HID wall packs, but without any of the high wattage heat and maintenance. Two standard housing sizes are available to cover existing HID wall pack profiles, for an easy one-to-one replacement. Integrated emergency battery back up system available in the larger 120W housing. Dimmable with standard 0-10v systems in all models. An integrated dusk-to-dawn photocell sensor automatically turns the fixture on/off relative to ambient light. Constructed out of heavy duty ADC12 die-cast aluminum with robust gaskets and seals to prevent moisture and insect ingress. Each fixture is rated for a minimum L70 of 50,000 hours with a dependable design that will operate hassle-free for many years.

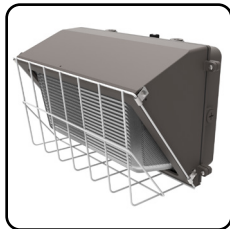
## KEY FEATURES

- Standard and Large profile configurations available for design flexibility
- All configurations are DLC 5.0 listed, Premium on standard profile models and Standard on large profile model
- 125+ LPW provides 40-60% in energy savings vs. HID equivalent fixtures
- Borosilicate glass diffusers for even illumination
- Emergency battery backup systems available on large profile model
- Integrated dusk-to-dawn photocell standard on all models, bypass cover cap included to disable feature if desired
- 120-277V drivers with 0-10v dimming standard
- Standard profile models: 90% lumen maintenance @ 50,000 hours – L90/50,000 | Projected L70 @ 170,000 hours (per IES TM21)
- Large profile models: 89% lumen maintenance @ 50,000 hours – L89/50,000 | Projected L70 @ 156,000 hours (per IES TM21)

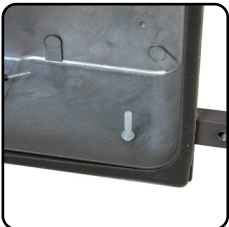
## Highlights



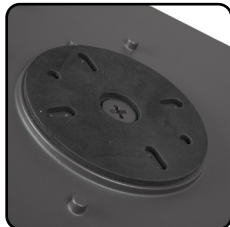
Integrated dusk-to-dawn photocell can be bypassed using included photocell cover cap.



Wire Guard available (optional)



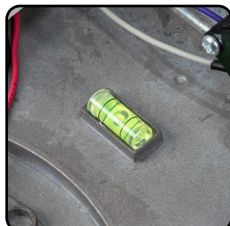
Weep hole plugs may be removed for proper condensation draining if desired



Integrated foam J-Box gasket provided for ease of installation and proper sealing of building wires



Multiple conduit twist-out (standard 1/2" trade size) provided:  
Large housing profile:  
Qty. 1 (left), Qty. 1 (right)  
Standard housing profile:  
Qty. 2 (bottom),  
Qty. 1 (left), Qty. 1 (right)  
Qty. 1 (top)



Integrated bubble level provided for faster and more convenient installation

## Load Information

<b>Input Voltage</b>	120-277Vac
<b>Power Factor</b>	>0.9
<b>THD</b>	<20%
<b>Low Temp Start</b>	-30°C (-22°F)
<b>Max Temp</b>	40°C (104°F)
<b>Unit Weight</b>	standard 10 LBS large 14 LBS

## Shipping Information

Item	Weight	Box Qty.
Standard profile	12 lbs	1 per
Large profile	16 lbs	1 per

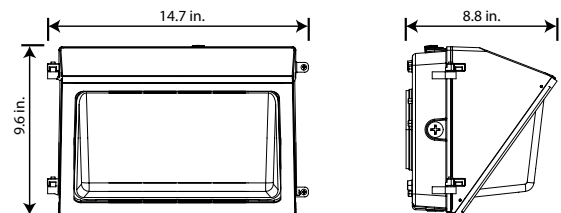
## Lumen Maintenance

Housing Type	Ambient Temperature	TM-21 Lumen Maintenance (50,000 hours)	Theoretical L70 (hours)
Standard profile	25°C	>90%	170,000
Large profile	25°C	>89%	156,000

## Dimensions

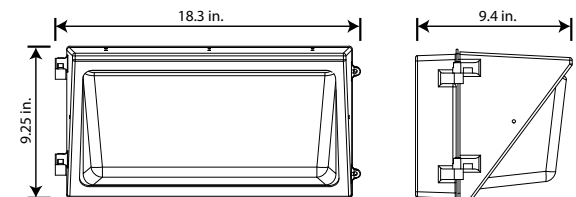
### Standard profile housing:

E3WPA28L-830  
E3WPA28L-840  
E3WPA28L-850  
E3WPA50L-830  
E3WPA50L-840  
E3WPA50L-850  
E3WPA70L-830  
E3WPA70L-840  
E3WPA70L-850



### Large profile housing:

E3WPA120L-740  
E3WPA120L-750  
E3WPA120LE-740  
E3WPA120LE-750





**STOCK ORDERING INFORMATION**

**3000K CCT, Small Housing Profile**

Catalog Logic	Order #	Lumens	Wattage	LPW	Color Temp	CRI	Voltage	Dimming	DLC	Pallet Qty
E3WPA28L-830	70084	3680	28	131	3000	>80	120-277	0-10v	DLC5.1-P	70
E3WPA50L-830	70085	6500	50	130	3000	>80	120-277	0-10v	DLC5.1-P	70
E3WPA70L-830	70086	9100	70	130	3000	>80	120-277	0-10v	DLC5.1-P	70

**4000K CCT, Small Housing Profile**

Catalog Logic	Order #	Lumens	Wattage	LPW	Color Temp	CRI	Voltage	Dimming	DLC	Pallet Qty
E3WPA28L-840	70070	3680	28	131	4000	>80	120-277	0-10v	DLC5.1-P	70
E3WPA50L-840	70072	6500	50	130	4000	>80	120-277	0-10v	DLC5.1-P	70
E3WPA70L-840	70073	9100	70	130	4000	>80	120-277	0-10v	DLC5.1-P	70

**5000K CCT, Small Housing Profile**

Catalog Logic	Order #	Lumens	Wattage	LPW	Color Temp	CRI	Voltage	Dimming	DLC	Pallet Qty
E3WPA28L-850	70075	3680	28	131	5000	>80	120-277	0-10v	DLC5.1-P	70
E3WPA50L-850	70077	6500	50	130	5000	>80	120-277	0-10v	DLC5.1-P	70
E3WPA70L-850	70078	9100	70	130	5000	>80	120-277	0-10v	DLC5.1-P	70

**4000K CCT, Large Housing Profile**

Catalog Logic	Order #	Lumens	Wattage	LPW	Color Temp	CRI	Voltage	Dimming	DLC	Pallet Qty
E3WPA120L-740	70080	15000	120	125	4000	80	120-277	0-10v	DLC5.0-S	56

**5000K CCT, Large Housing Profile**

Catalog Logic	Order #	Lumens	Wattage	LPW	Color Temp	CRI	Voltage	Dimming	DLC	Pallet Qty
E3WPA120L-750	70081	15000	120	125	5000	80	120-277	0-10v	DLC5.0-S	56

**Large Housing Profile with Integrated Emergency Battery Backup System**

Catalog Logic	Order #	Lumens	Wattage	LPW	Color Temp	CRI	Voltage	Dimming	DLC	Pallet Qty
E3WPA120LE-740	70082	15000	120	120	4000	80	120-277	0-10v	DLC5.0-S	
E3WPA120LE-750	70083	15000	120	120	5000	80	120-277	0-10v	DLC5.0-S	

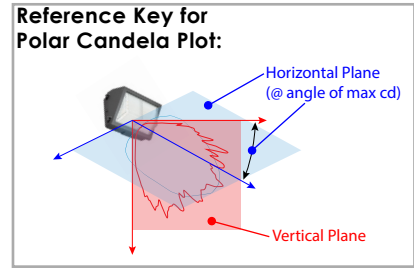
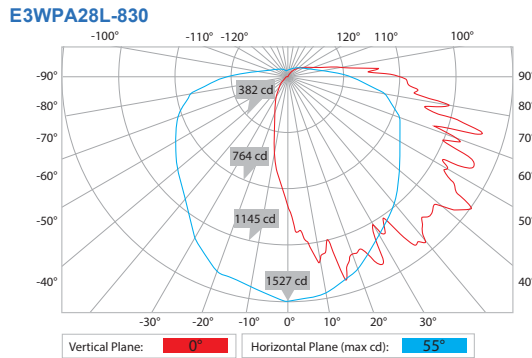
**Optional Accessories**

Catalog Logic	Order #	Description
E3WPA-WG-S	70068	Wireguard for standard profile housing (28W, 50W, 70W)
E3WPA-WG-L	70069	Wireguard for large profile housing (120W)


**PHOTOMETRIC DATA**

Cat Logic: E3WPA28L-830  
 Test Report: E3WPA28L\_830.ies  
 CCT: 3000K  
 Lamp Type: LED  
 Lumens: 3808.8 LM  
 Input Watts: 26.96 W  
 Efficacy: 141 LM/W  
 NEMA Type: 7H x 4V  
 BUG Rating: B1-U3-G3

**Polar Candela Plot**



**Isofootcandle Sampling**  
 Data from E3WPA28L-830  
 (representative for all CCT in 28W series)



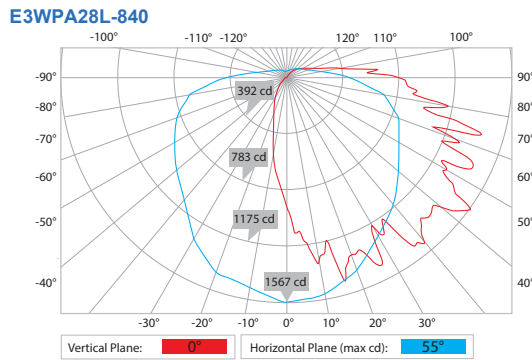
Mounting Height	Narrow		Wide	
	Iso-fc:	Radius:	Iso-fc:	Radius:
5 ft	28 fc MAX	6.3 ft	10 fc 6.3 ft	1 fc 16.2 ft
8 ft	16 fc MAX	9.4 ft	5 fc 9.4 ft	1 fc 18.5 ft
10 ft	9.8 fc MAX	8.6 ft	5 fc 8.6 ft	1 fc 19.3 ft
12 ft	6.5 fc MAX	5.6 ft	5 fc 5.6 ft	1 fc 20 ft
15 ft	4.2 fc MAX	7.7 ft	3 fc 7.7 ft	1 fc 21.3 ft
20 ft	2.3 fc MAX	9.3 ft	2 fc 9.3 ft	1 fc 19.9 ft

[Mounted on wall surface]

Cat Logic: E3WPA28L-840  
 Test Report: E3WPA28L\_840.ies\*  
 \*pro-rated from

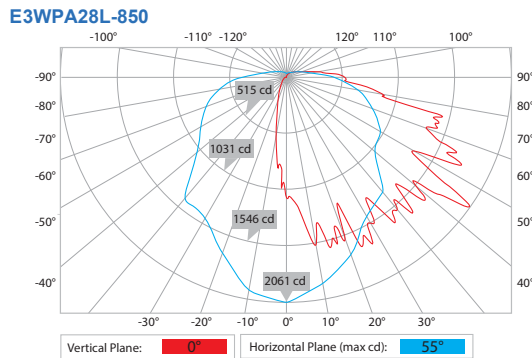
CCT: 4000K  
 Lamp Type: LED  
 Lumens: 3907 LM  
 Input Watts: 26.96 W  
 Efficacy: 144 LM/W  
 NEMA Type: 7H x 4V  
 BUG Rating: B1-U3-G3

**Polar Candela Plot**



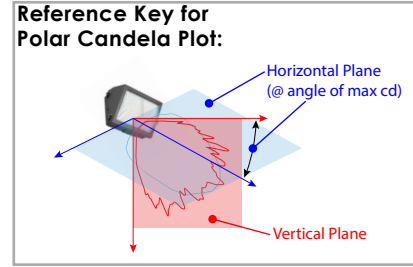
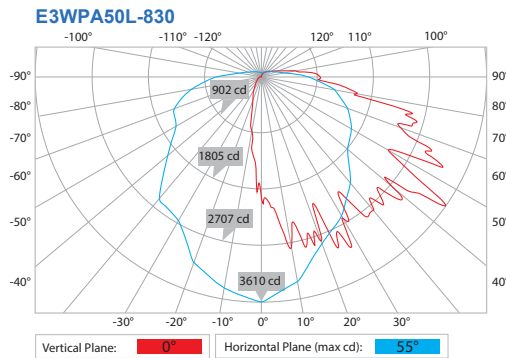
Cat Logic: E3WPA28L-850  
 Test Report: E3WPA28L\_850.ies  
 CCT: 5000K  
 Lamp Type: LED  
 Lumens: 4005.9 LM  
 Input Watts: 27.23 W  
 Efficacy: 147 LM/W  
 NEMA Type: 7H x 4V  
 BUG Rating: B1-U3-G3

**Polar Candela Plot**




**PHOTOMETRIC DATA**

Cat Logic: E3WPA50L-830  
 Test Report: E3WPA50L\_830.ies  
 CCT: 3000K  
 Lamp Type: LED  
 Lumens: 7014.2 LM  
 Input Watts: 50.09 W  
 Efficacy: 140 LM/W  
 NEMA Type: 7H x 3V  
 BUG Rating: B1-U3-G3

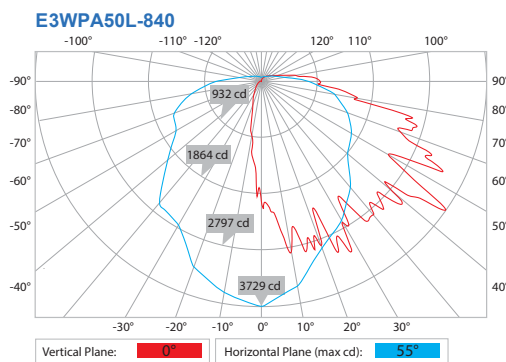
**Polar Candela Plot**

**Isofootcandle Sampling**

Data from E3WPA50L-830  
(representative for all CCT in 50W series)

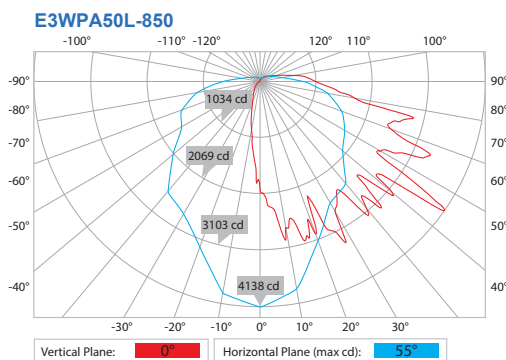


Mounting Height	Narrow		Wide	
	MAX	Iso-fc:	Diameter:	Diameter:
5 ft	53 fc	25 fc	5.6 ft	1 fc
8 ft	30 fc	10 fc	9.7 ft	1 fc
10 ft	20 fc	10 fc	8.4 ft	1 fc
12 ft	14 fc	7.5 fc	9 ft	1 fc
15 ft	9 fc	5 fc	11 ft	1 fc
20 ft	4.7 fc	3 fc	11.6 ft	1 fc

Cat Logic: E3WPA50L-840  
 Test Report: E3WPA50L\_840.ies\*  
 \*pro-rated from E3WPA50L\_830.ies  
 CCT: 4000K  
 Lamp Type: LED  
 Lumens: 7245 LM  
 Input Watts: 50.09 W  
 Efficacy: 144 LM/W  
 NEMA Type: 7H x 3V  
 BUG Rating: B1-U3-G3

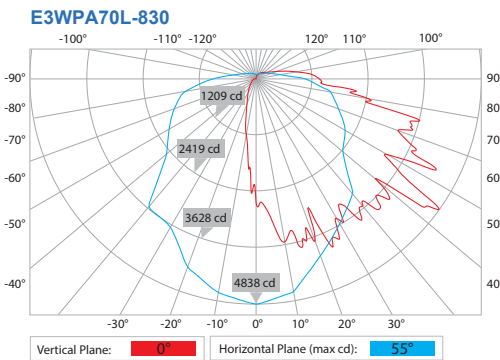
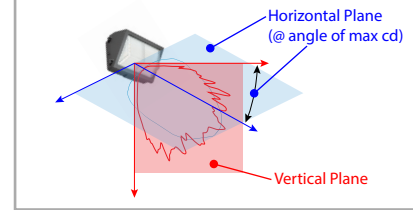
**Polar Candela Plot**


Cat Logic: E3WPA50L-850  
 Test Report: E3WPA50L\_850.ies  
 CCT: 5000K  
 Lamp Type: LED  
 Lumens: 7477 LM  
 Input Watts: 50.02 W  
 Efficacy: 149 LM/W  
 NEMA Type: 7H x 3V  
 BUG Rating: B1-U3-G3

**Polar Candela Plot**


**PHOTOMETRIC DATA**

Cat Logic: E3WPA70L-830  
 Test Report: E3WPA70L\_830.ies  
 CCT: 3000K  
 Lamp Type: LED  
 Lumens: 9591.2 LM  
 Input Watts: 69.33 W  
 Efficacy: 138 LM/W  
 NEMA Type: 7H x 3V  
 BUG Rating: B1-U4-G4

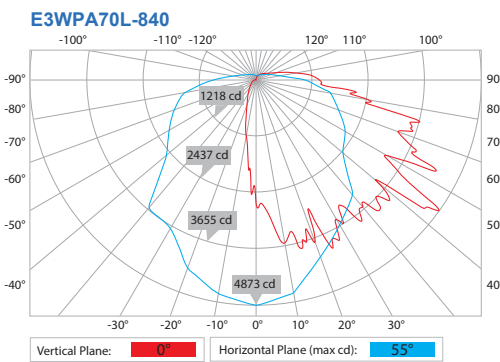
**Polar Candela Plot**

**Reference Key for Polar Candela Plot:**

**Isofootcandle Sampling**

Data from E3WPA70L-830  
(representative for all CCT in 70W series)

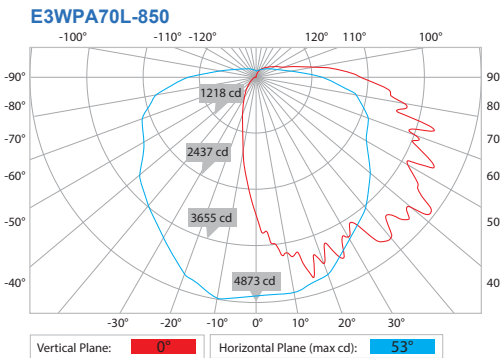

**Mounting Height**

Mounting Height	Narrow		Wide	
	MAX	Iso-fc:	Diameter:	Diameter:
5 ft	71 fc	25 fc	7.1 ft	21.5 ft
10 ft	28 fc	20 fc	5.4 ft	28.1 ft
15 ft	12 fc	10 fc	8.3 ft	32.3 ft
20 ft	6.2 fc	5 fc	10 ft	32.2 ft
25 ft	3.9 fc	3 fc	14 ft	34.8 ft
30 ft	3.1 fc	3 fc	14 ft	32.7 ft

Cat Logic: E3WPA70L-840  
 Test Report: E3WPA70L\_840.ies\*  
 \*pro-rated from E3WPA70L\_830.ies  
 CCT: 4000K  
 Lamp Type: LED  
 Lumens: 9662 LM  
 Input Watts: 69.33 W  
 Efficacy: 139 LM/W  
 NEMA Type: 7H x 3V  
 BUG Rating: B1-U4-G4

**Polar Candela Plot**


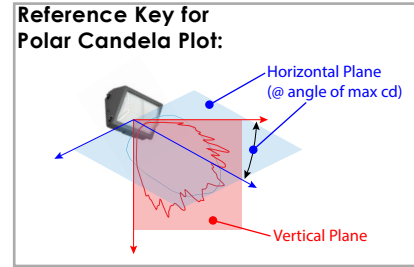
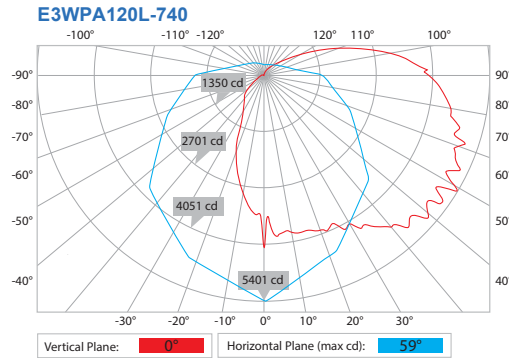
Cat Logic: E3WPA70L-850  
 Test Report: E3WPA70L\_850.ies  
 CCT: 5000K  
 Lamp Type: LED  
 Lumens: 9733.8 LM  
 Input Watts: 68.9 W  
 Efficacy: 141 LM/W  
 NEMA Type: 7H x 4V  
 BUG Rating: B1-U4-G5

**Polar Candela Plot**


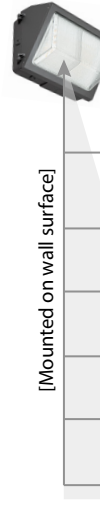
**PHOTOMETRIC DATA**

Cat Logic: E3WPA120L-740  
 Applicable Models: E3WPA120L-750  
 Test Report: E3WPA120L\_740.ies  
 CCT: 4000K  
 Lamp Type: LED  
 Lumens: 15500.6 LM  
 Input Watts: 122.5 W  
 Efficacy: 126 LM/W  
 NEMA Type: 7H x 5V  
 BUG Rating: B3-U5-G5

**Polar Candela Plot**



**Isofootcandle Sampling**  
 Data from E3WPA120L-840  
 (representative for all CCT in 120W series)



Mounting Height	Narrow		Wide	
	Iso-fc:	Radius:	Iso-fc:	Radius:
5 ft	85 fc MAX	25 fc 8 ft	1 fc 25 ft	
10 ft	32 fc MAX	20 fc 7.2 ft	1 fc 32 ft	
15 ft	14 fc MAX	10 fc 8.6 ft	1 fc 36 ft	
20 ft	8 fc MAX	6 fc 9.4 ft	1 fc 38 ft	
25 ft	5 fc MAX	4 fc 10 ft	1 fc 39 ft	
30 ft	3.5 fc MAX	3 fc 10 ft	1 fc 40 ft	



**NOTES:**



**ENERGETIC**  
L I G H T I N G

**E3WPA**

LED Wall Pack  
50,000 System Lifetime • 10-yr Warranty

**NOTES:**

A large, empty rectangular box with a blue border, intended for user notes or specifications.